

## Single Leaf EI<sub>2</sub>30 / T30 Fire Retardant Vertically Pivoted Steel Door

<b>Fire Protection</b>	<b>EI<sub>2</sub>30 / T30</b>	<b>tested acc. to EN 1634-1</b>
<b>Smoke Control (optional)</b>	<b>S<sub>a</sub>, S<sub>200</sub> / RS</b>	<b>tested acc. to EN 1634-3</b>
<b>Self-Closing (optional)</b>	<b>up to C5</b>	<b>tested acc. to EN 1191</b>
<b>Sound Insulation</b>	<b>R<sub>w,P</sub> 38 dB</b>	<b>tested acc. to EN ISO 10140-2</b>

### Optional Audited Additional Functions

- Burglar Protection	<b>RC2/RC3</b>	tested acc. to EN 1627
- Bullet Resistance	<b>FB4-NS</b>	tested acc. to EN 1522
- Air Tight	<b>up to class 3</b>	tested acc. to EN 1026
- Rain- and Fire-Water Tight	<b>class 2B</b>	tested acc. to EN 1027
- Wind load Resistance	<b>class C5</b>	tested acc. to EN 12211
- Blast Resistance	<b>up to 2 kPa</b>	tested acc. to EN 13124-1
- Explosion Protection	<b>up to zone 1/21</b>	acc. to EN 1127-1 or ATEX 2014/34/EU
- Stainless Steel		

### Range of Dimension

**Width** from 1000 mm to 1750 mm  
**Height** from 1750 mm to 3500 mm

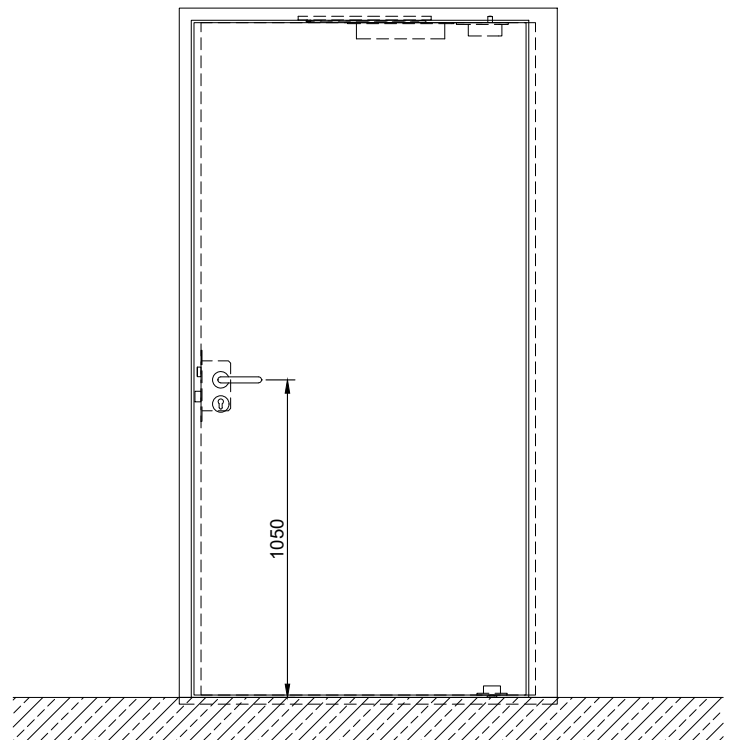
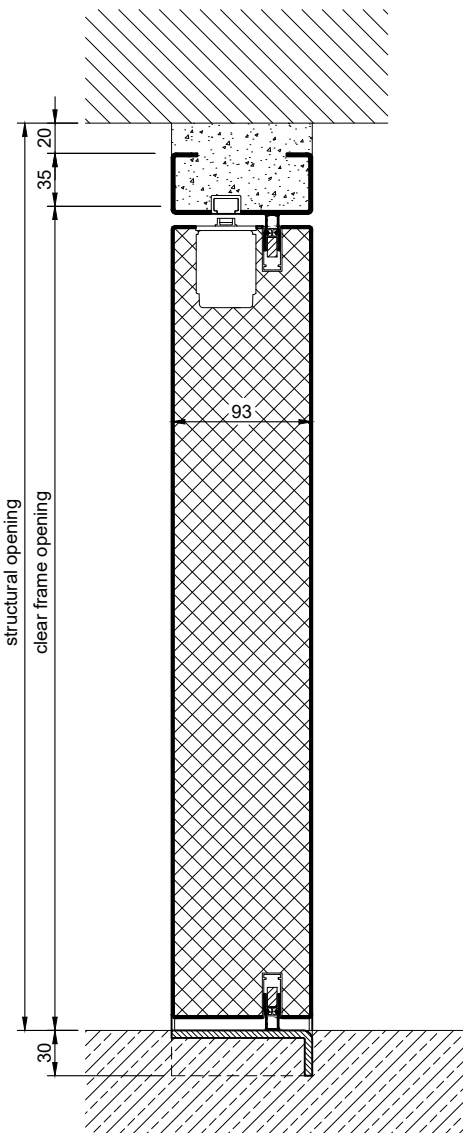
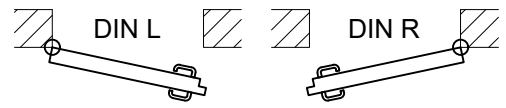
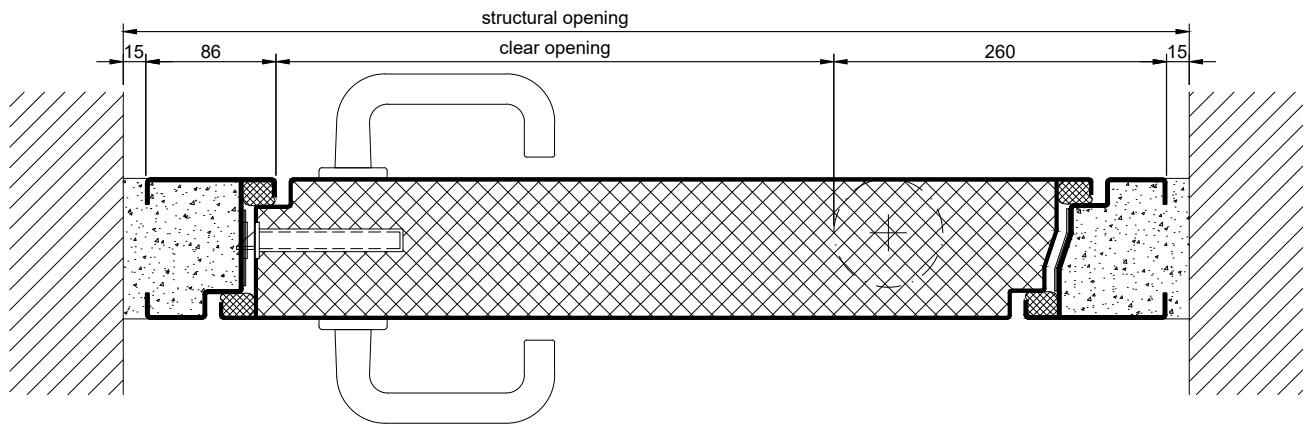
### Technical Specification and Tender Text

<b>Product:</b>	<b>EI<sub>2</sub>30 / T30 single leaf fire retardant vertically pivoted steel door brand Buchele tested acc. to EN 1634-1 und EN ISO 10140-2</b>
<b>Door Type:</b>	<b>ROTARY Line RL 301</b>
<b>Sound Insulation R<sub>w,P</sub></b>	<b>38 dB</b>
<b>Structure Opening:</b>	<b>.... x .... mm</b>
<b>Door Leaf:</b>	Double-walled, planar 93 mm thick steel door leaf, two sides rebated with thick rebate and adjustable fixed sealing profile in rebate. Without bottom stop. Special insulating inserts fully laid-in and glued. Drop sealing system in bottom part of the door. Lift sealing system in top part of the door.
<b>Threshold:</b>	Floor bracket as separation sill. Surface stainless steel and welded to the frame.
<b>Frame:</b>	3-sided circumferential rebated block frame with visible black coated intumescent material in rebate. High-quality multi chamber sealing profile adjustable fixed in the two-sided groove.
<b>Hinges:</b>	Concealed hinge system integrated in frame and floor, ball bearing mounted for smart door movement. The door leaf rotates around a vertical axis.
<b>Door Closer:</b>	Concealed slide rail door closer system acc. to EN 1154 integrated in frame and door leaf.

<b>Fitting:</b>	Mortise lock with latch lever function acc. to EN 12209 (prepared for installation of a profile cylinder lock, provided by customer). Door handle set in acc. to EN 1906 fixed pivoted synthetic material black in U-shape with rounded short-plate.
<b>Surface:</b>	Door leaf and frame galvanized und primed with 2K-PUR primer (Very High Solid) similar RAL 7035.
<b>Installation:</b>	masonry $\geq 115$ mm concrete $\geq 100$ mm areated concrete $\geq 200$ mm mounting wall F60 $\geq 125$ mm

### Supplementary Equipment

<b>Standard Glazing:</b>	F30 fire-protective glazing fixed with profiled and visible screwed steel glazing bars. Minimum border 125 mm on side and top, base 300 mm.
<b>Flush Glazing:</b>	F30 special glazing flush mounted with outer edge of door leaf on hinge side and opposite hinge side. Edge enamelling and permanent elastic glazing joint in colour black RAL 9004. Minimum border 125 mm on side and top, base 300 mm.
<b>Stainless Steel:</b>	Material 1.4301 (V2A) or 1.4404 (V4A), Surface mill finish or brushed.
<b>BUCHELE DELUXE:</b>	The exclusive surface coating.



1.1.8\_ROTARY LINE RL 301 38 DB\_EN

technische Änderungen vorbehalten - Stand 03/2024